

*plus.audio*

# ***MPS SERIES***

*Powerful. Versatile. Built to Perform.*



***MPS12A // MPS15A***



*plus.audio*

# **MPS SERIES**

*Powerful. Versatile. Built to Perform.*

## **Powerful Output**

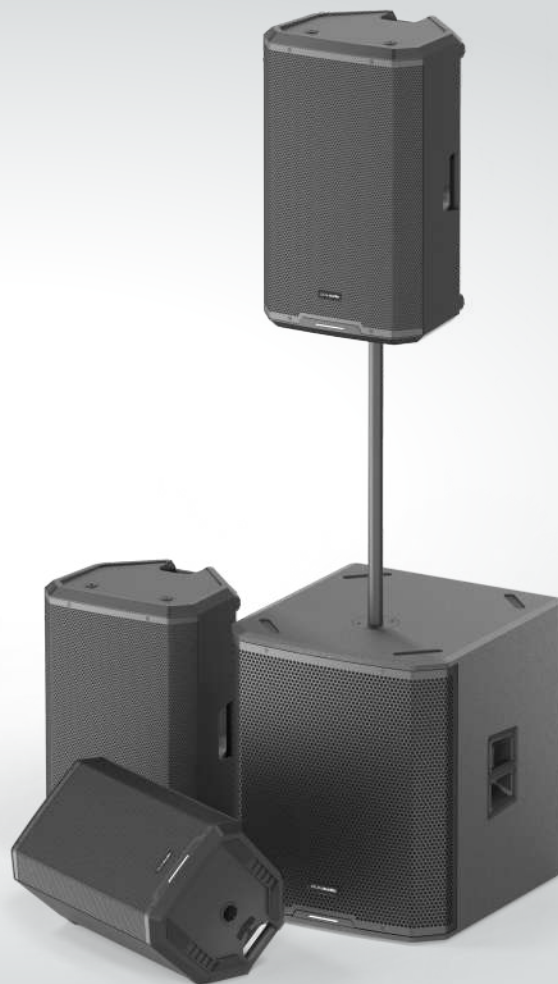
With a peak power of 2000W, the MPS Series delivers robust audio performance, making it suitable for a range of demanding environments.

## **Advanced Driver Technology**

Equipped with a high polymer diaphragm compression driver offering superior high-frequency clarity and transparency compared to traditional titanium diaphragm tweeters.

## **Flexible Connectivity**

Includes Bluetooth™ audio input with True Wireless Stereo (TWS) functionality, 2 combo XLR inputs and an XLR output for versatile integration.





## Efficient Amplification

Utilizes lightweight Class D amplification, is passively cooled for silent, fanless operation, and features a limiter with front and rear LED clip indicators.

## Intuitive Control

An Android and iOS app provides remote control capabilities via Bluetooth™, while a 2.4-inch colour LCD screen offers comprehensive DSP feature access including ducking, speaker location presets, bass and treble shelving EQ, 4-band parametric EQ on the analog inputs and 100 meters of delay for precise time alignment.

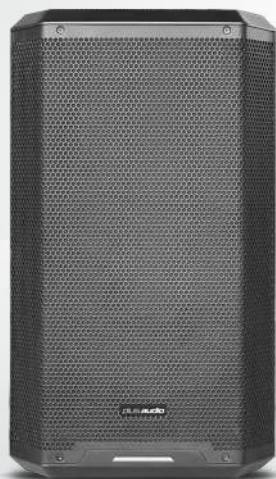
## Coverage and Mounting

The MPS Series offers a 90° x 70° coverage pattern and features a 35mm pole socket along with three M10 suspension points for flexible mounting options.



plus.audio

# MPS12A

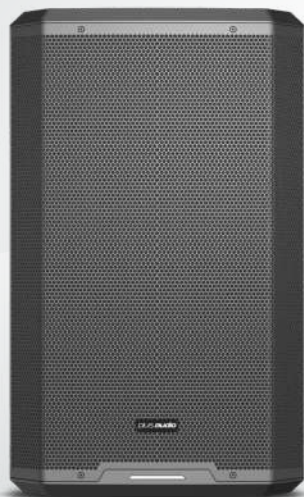


## Technical Specifications

Model	MPS12A
Max. SPL	129dB
Frequency response	50 Hz – 20 kHz
Power amp output	1000W (RMS) / 2000W (Peak)
Amp type	Class D
Low-/mid speaker	12"
HF driver	1.35"
Analog inputs	2x Combo XLR
Analog outputs	1x XLR-M
Display	2.4" colour display
DSP functions	Master / channel volume and mute, 2-band shelving EQ, 4-band PEQ, low-cut filter 20-150hz, front LED (on/off/limit), delay, ducking.
Sound modes	Live/Club/Speech/Flat
Setup modes	Pole/Monitor/Bracket
Delay	0 -100m
Analog output modes	Mix / Link includes Bluetooth™ pass-through
Bluetooth features	Audio streaming with stereo linking and remote control for 2 speakers
Pole mount	35mm mounting pole
Rigging points	3x M10
Power consumption	800W
Dimensions (HxWxD)	628 x 359 x 353 mm
Weight	16.9kg

plus.audio

# MPS15A



## Technical Specifications

Model	MPS15A
Max. SPL	130dB
Frequency response	45 Hz – 20 kHz
Power amp output	1000W (RMS) / 2000W (Peak)
Amp type	Class D
Low-/mid speaker	15"
HF driver	1.35"
Analog inputs	2x Combo XLR
Analog outputs	1x XLR-M
Display	2.4" colour display
DSP functions	Master / channel volume and mute, 2-band shelving EQ, 4-band PEQ, low-cut filter 20-150hz, front LED (on/off/limit), delay, ducking.
Sound modes	Live/Club/Speech/Flat
Setup modes	Pole/Monitor/Bracket
Delay	0 -100m
Analog output modes	Mix / Link includes Bluetooth™ pass-through
Bluetooth features	Audio streaming with stereo linking and remote control for 2 speakers
Pole mount	35mm mounting pole
Rigging points	3x M10
Power consumption	800W
Dimensions (HxWxD)	703 x 430 x 403 mm
Weight	21.5kg



**Plus Audio is a Stage Audio Works Brand**

22 Kyalami Boulevard, Kyalami Park, Midrand, 1684, South Africa  
087 55 10 100 | [www.plus.audio](http://www.plus.audio)